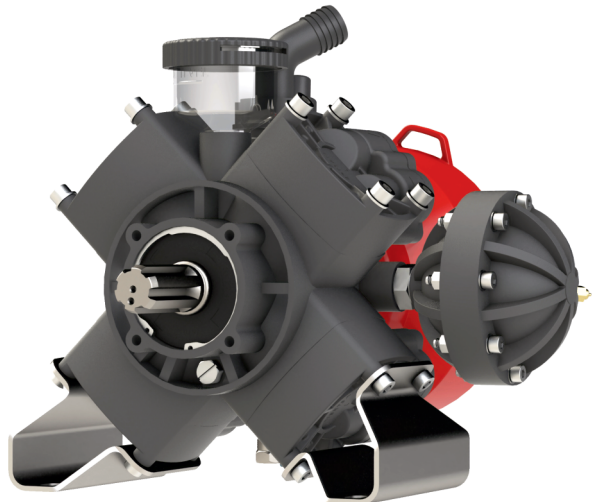
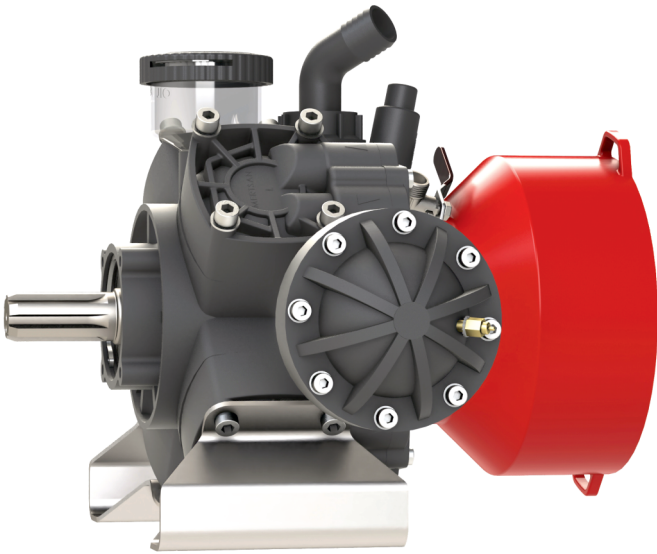


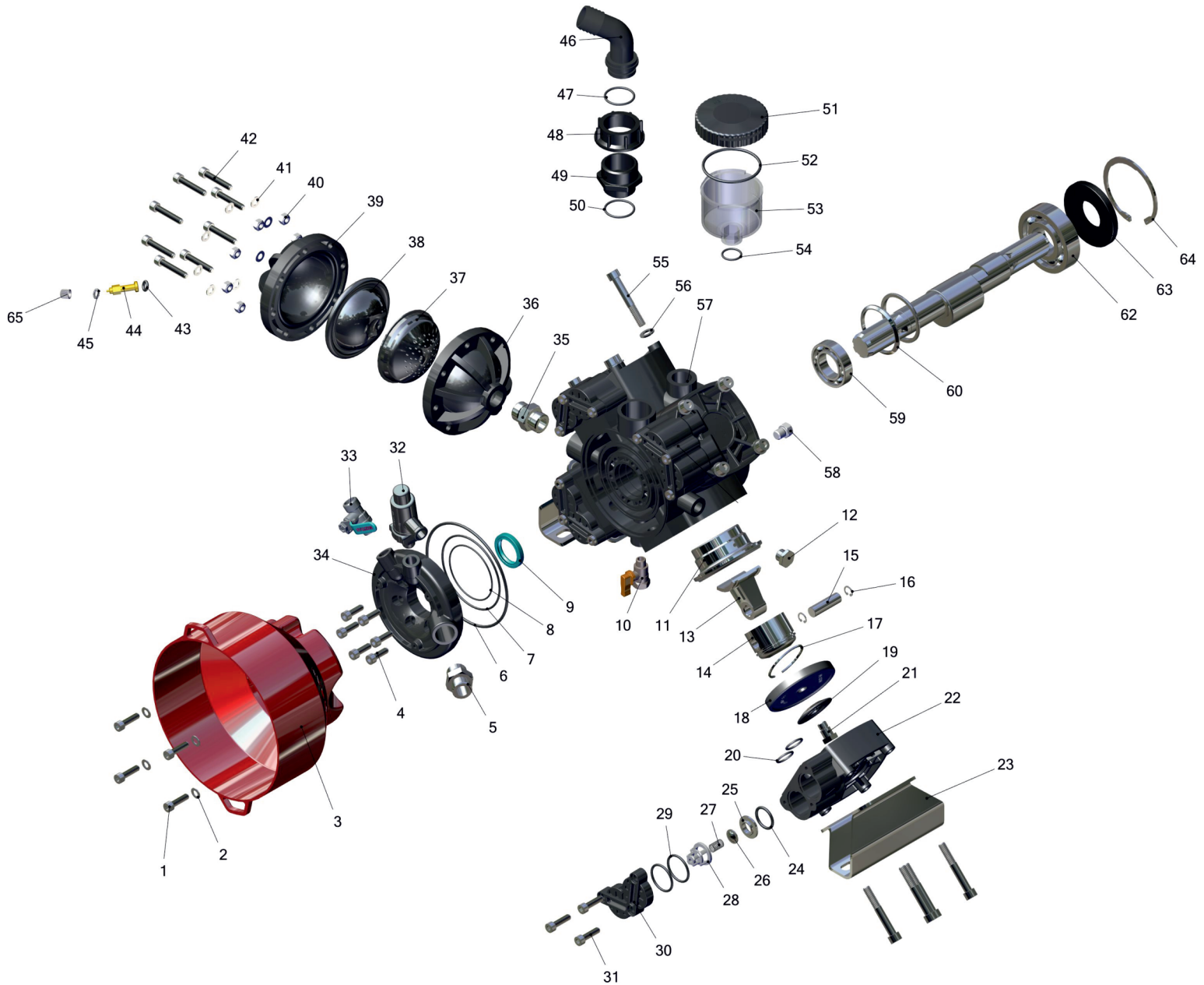
MTS-496 Z



KOD/CODE	MTS-496 Z
DEBİ (LT./DAK.) FLOW (LT./MIN.)	96
DEVİR (D./DAK.) SPEED (R.P.M)	540
GÜÇ (HP) POWER	7.5
PİSTON PISTON	4
BASINÇ (BAR) PRESSURE	50
YAĞ CİNSİ OIL TYPE	20W50
YAĞ KAPASİTESİ (LT.) OIL CAPACITY	1.1
ÖLÇÜLER (CM) DIMENSIONS	33x40x37
AĞIRLIK (KG) WEIGHT	24.45



MTS-496 Z



MTS-496 Z

№	ÜRÜN KODU / PRODUCT CODE	AÇIKLAMA / DESCRIPTION	ÖLÇÜLER / DIMENSIONS	ADET / QTY
1	MTS-496 Z/1	İMBUS CİVATA / SCREW	ø M6x10	4
2	MTS-496 Z/2	PUL / RONDELA	ø 6 MM	4
3	MTS-496 Z/3	ŞAFT MUHAFAZA / CARDAN PROTECTION		1
4	MTS-496 Z/4	İMBUS CİVATA / SCREW	ø M8x25	6
5	MTS-496 Z/5	DEMİR NİPEL / NIPPLE (STAINLESS)	G ¾"	1
6	MTS-496 Z/6	ORİNG / O-RING	ø 145.72x2.62	1
7	MTS-496 Z/7	ORİNG / O-RING	ø 100.00x2.00	1
8	MTS-496 Z/8	ORİNG / O-RING	ø 074.00x2.00	1
9	MTS-496 Z/9	KEÇE / SEAL	ø 35x47x7	1
10	MTS-496 Z/10	KELEBEK VANA / BALL VALVE	(G ¾" M ¾" F)	1
11	MTS-496 Z/11	GÖMLEK / PISTON SLEEVE		4
12	MTS-496 Z/12	KÖR TAPA / BLANKING TAP		1
13	MTS-496 Z/13	BİYEL KOLU / CONNECTION ROD		4
14	MTS-496 Z/14	PISTON / PISTON	ø 58	4
15	MTS-496 Z/15	PERNO / PERNO	ø 14	4
16	MTS-496 Z/16	SEGMAN / PISTON RING	ø 14x1 MM	8
17	MTS-496 Z/17	SEGMAN / PISTON RING	ø 58	4
18	MTS-496 Z/18	MEMBRAN LASTİĞİ / MEMBRANE RUBBER		4
19	MTS-496 Z/19	MEMBRAN PULU / MEMBRANE WASHER		4
20	MTS-496 Z/20	ORİNG / O-RING	ø 021.00x3.00	8
21	MTS-496 Z/21	MEMBRAN CİVATASI / MEMBRANE HOLDER SCREW	ø M12x20	4
22	MTS-496 Z/22	MEMBRAN KAPAĞI / MEMBRANE COVER		4
23	MTS-496 Z/23	AYAK / PUMP MOUNTING STAND		2
24	MTS-496 Z/24	ORİNG / O-RING	ø 024.99x3.00	8
25	MTS-496 Z/25	SİBOP KROMU / VALVE CHROMIUM		8
26	MTS-496 Z/26	SİBOP PULU / VALVE WASHER		8
27	MTS-496 Z/27	SİBOP YAYI / VALVE SPRING		8
28	MTS-496 Z/28	SİBOP KAFESİ / VALVE CAGE		8
29	MTS-496 Z/29	ORİNG / O-RING	ø 033.00x3.00	8
30	MTS-496 Z/30	GÖZLÜK / PLUG		4
31	MTS-496 Z/31	İMBUS CİVATA / SCREW	ø M8x30	12
32	MTS-496 Z/32	EMNİYET VALFİ / SAFETY VALVE	G ¾"	1
33	MTS-496 Z/33	VANA / VALVE	G ¾"	1
34	MTS-496 Z/34	MANİFOLD KAPAĞI / MANIFOLD COVER		1
35	MTS-496 Z/35	DEMİR NİPEL / NIPPLE (STAINLESS)	G ¾"	1
36	MTS-496 Z/36	HAVA TÜPÜ ALT KAPAK / AIR TUBE INFRA ACCUMULATOR		1
37	MTS-496 Z/37	HAVA TÜPÜ İÇ PLASTİK / AIR TUBE INNER PLASTIC		1
38	MTS-496 Z/38	HAVA TÜPÜ İÇ LASTİK / AIR TUBE INNER LASTIC		1
39	MTS-496 Z/39	HAVA TÜPÜ ÜST KAPAK / AIR TUBE UPPER ACCUMULATOR		1
40	MTS-496 Z/40	FİBERLİ SOMUN / FIBER NUT	ø 8 MM	8
41	MTS-496 Z/41	PUL / RONDELA	ø 8 MM	8
42	MTS-496 Z/42	İMBUS CİVATA / SCREW	ø M8x45	8
43	MTS-496 Z/43	ORİNG / O-RING	ø 007.59x2.62	1
44	MTS-496 Z/44	TÜP SİBOBU / AIR TUBE VALVE		1
45	MTS-496 Z/45	PUL / RONDELA	ø 8 MM	1
46	MTS-496 Z/46	(SU GİRİŞİ) DİRSEK / HOSETAIL FOR FLY NUT	G1 ¼" Ø 32x32	1
47	MTS-496 Z/47	ORİNG / O-RING	ø 027.00x4	1
48	MTS-496 Z/48	(SU GİRİŞİ) DİRSEK SOMUNU / LOCK NUT	G1 ¼"	1
49	MTS-496 Z/49	NİPEL / NIPPLE		1
50	MTS-496 Z/50	ORİNG / O-RING	ø 024.99x3.53	1
51	MTS-496 Z/51	YAĞDANLIK KAPAĞI / OILCAN COVER		1
52	MTS-496 Z/52	ORİNG / O-RING	ø 071.44x3.53	1
53	MTS-496 Z/53	YAĞDANLIK GÖVDESİ / OILCAN		1
54	MTS-496 Z/54	ORİNG / O-RING	ø 021.00x3.00	1
55	MTS-496 Z/55	İMBUS CİVATA / SCREW	ø M10x70	16
56	MTS-496 Z/56	PUL / RONDELA	ø 10 MM	12
57	MTS-496 Z/57	GÖVDE / CRANKCASE		1
58	MTS-496 Z/58	YAĞ BOŞALTMA TAPASI / OIL OUTPUT TAP		1
59	MTS-496 Z/59	RULMAN / BEARING	ø 6207	1
60	MTS-496 Z/60	BİLEZİK / RING	ø 5.5x60	2
61	MTS-496 Z/61	KRANK / CRANK		1
62	MTS-496 Z/62	RULMAN / BEARING	ø 6308	1
63	MTS-496 Z/63	KEÇE / SEAL	ø 40x90x10	1
64	MTS-496 Z/64	SEGMAN / PISTON RING	ø 90	1
65	MTS-496 Z/65	TÜP SİBOP KAPAĞI / AIR TUBE VALVE COVER		1